



SSNSC SOUTH SHORE NATURAL SCIENCE CENTER



48 Jacobs Lane, P.O. Box 429, Norwell, MA 02061

781-659-2559 www.ssnc.org ssnc@comcast.net

Hours: Monday-Saturday, 9:30am-4:30pm • Admission \$7.00/Adult • \$5.00/Senior (60+) • \$3.00/Children (3-15)

Trails open daily from dawn until dusk ~ free for your enjoyment



Winter Newsletter 2012

Maple Festival ~ Sunday, March 11th~11am-4pm

\$5M per person-\$20 max per family, \$8NM per person-\$32 max per family

Fee also includes admission to the EcoZone. This is a drop-in event. Join us for a sweet day as we explore maple history, culture, and tasting. Enjoy the process from start to finish! Help us tap the trees for sap and then watch how the sap is boiled into syrup. The day will include woodland walks for tapping, sweet treats, and fun crafts & activities for the children.



Spring Stirrings Benefit Weekend ~ March 30 – April 1

Get a jump on Spring and join us for Spring Stirrings featuring butterflies from the Butterfly Place, the floral creations of talented local designers and horticulturalists, intimate landscapes from garden centers, and displays of outdoor patio and garden furniture. Come to our Opening Gala and Silent Auction on Friday, March 30, where you can sample delicacies from the finest area caterers and restaurants while listening to music from local musicians. Saturday and Sunday, March 31 and April 1, will be your opportunity to enjoy garden-related lectures, admire floral & garden displays and arrangements, browse and shop for gardening related treasures. Enjoy lunch on Saturday and a delicious tea Sunday afternoon. What a way to step into Spring!



Program Open House ~ *Check out what we do!*

Thursday, January 26, 4:00-8:00pm: For Educators & PTOs

Saturday, January 28, 9:30am-4:30pm: For those interested in Birthday, Scout, Homeschool, & Public Programs

- Wide range of program themes for preschool through high school
- Teacher Workshop Offerings
- Talk with our Education Director and Educator Naturalists
- Exhibits, information, resources and live animals!



Film Series: “What ARE We Eating???”

Have you wondered about toxins in food? The environmental costs of what we eat? What are our kids eating? How to connect with your community? Do you need a little inspiration in your diet? Join us in collaboration with South Shore YMCA Mill Pond and Sustainable South Shore. Our first series **What ARE We Eating???** runs on the 3rd Thursday of each month beginning in January. Join us for the films, discussion and some surprise guests centered around community, food, nutrition, farming, and sustainability.

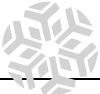


January 19: “FOOD MATTERS”

February 16: “FRESH”

March 15: “THE TRUE COST OF FOOD”



FOR YOUTH DEVELOPMENT®
FOR HEALTHY LIVING
FOR SOCIAL RESPONSIBILITY

Sunday	Monday	Tuesday	Wednesday	Thursday	Friday	Saturday
JANUARY						
1 New Years Walk	2	3	4 Parents & Tots	5	6	7
8 	9	10 Homeschool	11 Parents & Tots	12	13	14 Monkey Party Winter Birding
15	16 Snowbirds	17 Mom & Me	18 Parents & Tots	19 Sens. Science Food Film	20	21
22	23	24	25 Parents & Tots	26 Open House	27 	28 Open House
29 Alligators & Crocs Show	30	31				
FEBRUARY			1 Parents & Tots	2	3	4
5 Spike's Bday	6 Chocolate	7	8 Parents & Tots	9	10	11 Family Snowshoe
12 Single's Snowshoe	13	14 Homeschool	15 Parents & Tots	16 Sens. Science Food Film	17	18 Winter Discovery Day
19	20	21 All over the map	22 All over the map	23 All over the map	24 All over the map	25 Terrariums
26	27	28 Mom & Me	29			
MARCH				1	2	3 Winter Birding
4	5	6	7 Parents & Tots	8	9	10
11 Maple Fest	12	13 Homeschool	14 Parents & Tots	15 Sens. Science Food Film	16	17 Growing Wild
18	19	20 Mom & Me	21 Parents & Tots	22	23 Photography	24 Birds Sing New Plants
25 	26	27	28 Parents & Tots	29	30 Spring Stirrings	31 Spring Stirrings

On Our Trails & Ongoing Drop-Ins

Discovery Trail-An Outdoor Family Experience

Thanks to a grant from REI, the support of Mike McKenna and Derby St. Shoppes, and our many volunteers, the Discovery Trail at South Shore Natural Science Center is now complete. The trail features elements for play and exercise such as a musical fence, xylophone, sensory box, discovery tables, mushroom hoppers, log path, balance beams and pull up bars. Set behind the main building at the Science Center, the trail is designed to enhance the outdoor family experience.

Story Walks

Enjoy our trails in a different way! Combine two great activities, exercising and reading, and walk a trail as you follow a children's story that is posted page-by-page along the path. Fun for the young and the young at heart! Please check our website for details.

Special Drop-In Programs

Free with Admission

February Vacation Week (February 20-24)

Feed the Animals at 3:00pm: Wednesday
Meet An Animal at 2:00pm: Monday (also 10:00am),
Tuesday, Thursday, Friday

Ongoing Drop-In Programs

Free with paid admission

Feed the Animals

Saturdays at 10:00am & Wednesdays at 3:00pm
Watch the naturalist feed the animals and learn more
about them!

Meet an Animal

Saturdays at 2:00pm
Monday holidays at 10:00am & 2:00pm
The Naturalist features a different animal each week.

Tales from the Wild

For children ages 3-5 Fridays 10:30-11:00am
Join us for stories and tales about animals and nature.
Call in advance, if you plan to attend.



SSNSC and SSYMCA Working Towards a Joint Future

As hopefully you have heard, we are very pleased to announce the merger of SSNSC and the South Shore YMCA effective Sept. 1 2011. With any transition of this nature, the last several months have been a very busy and exciting period. SSNSC and SSYMCA staff members have been hard at work getting to know each other, and working together to merge the organization into an effective operation. Bruce Netherwood, SSYMCA Exec. Director of Camping Services and Outdoor Education, has been on site regularly meeting with the SSNSC staff and getting a better understanding of their respective responsibilities.

As was discussed during the final merger negotiations, SSYMCA committed \$500,000 in Capital Funding over the next five years with \$250,000 to be allocated in the first year of the transition. A fairly comprehensive listing of capital initiatives has been finalized. While continually a work-in-progress, it currently encompasses both facility & grounds improvements, additional program enhancements, and acquisition of needed equipment.

On the programming level, SSNSC is already benefitting from this merger! We have two confirmed partnerships resulting in some great upcoming programs. Look forward to 'River Camp' in our upcoming Camp Brochure as a joint venture between SSNSC, SSYMCA, and NSRWA.

You can also find a film series, "What ARE we Eating" on the first page as a joint effort between SSNSC and SSYMCA-Mill Pond. Anticipate more quality programs supported by YMCA branches! An added SSNSC member benefit also includes the opportunity to join the YMCA without a joining fee saving up to \$150.

This is an exciting time for SSNSC and while integrations of this kind are not always easy and straight forward, we're confident and committed that the end result will be a Science Center totally focused on its Mission, and with the help of SSYMCA staff and resources, making that Mission known and understood by many thousands of individuals throughout our South Shore communities.

While we proceed in coordinating our operations with the SSYMCA, all the exciting activities and programs of the Science Center continue to move forward. Your participation and support are needed and are very critical to our ongoing success. Events such as Maple Festival, Spring Stirrings, and Green Earth Festival are right on schedule for Spring 2012. We welcome your continued input and involvement with any/all of these upcoming events.



"Why are there so many mushrooms in the woods?" "What kind of animal lives in this hole?" "Where do turtles go in the winter?" These are just a few of the questions that curious preschoolers ask on any given day at Nature Center Preschool. Young children are encouraged to think through the answers, make observations, and come up with their own ideas. This type of exploration builds a lifelong love of learning. In January, the Preschool classes will be looking for animal tracks, talking about how animals adapt to the cold weather, and playing in the snow! Friendship is a theme throughout the year but has even greater significance during the valentine season of February when we'll be talking about friends who may be other children, or teachers, and animal friends. In March, we will use our imagination to travel to another country and explore the animals, land, and people there.

Registration for the fall of 2012 is underway! For more information, please visit our Preschool page on our website www.ssnsnc.org, email us at preschool@ssnsnc.org, or call 781-659-2559 x216.

Welcome, Joan!

Nature Center Preschool has a new very well qualified teacher, Joan Aigen, in the Monday-Wednesday-Friday AM & PM programs. Joan comes to us from New Nursery School where she was the director for a number of years.

Coes Greenhouse News

Since last spring, camp and preschool children have been enjoying gardening, from turning soil, planting seeds, weeding through to eating the fruits of their labors. They planted and cared for several small gardens including the Peter Rabbit Garden as well as various large pots of vegetables. The Greenhouse provides a warm sunny place to start and grow seeds and Dot, our Greenhouse Specialist, often offers help and advice along the way. The nice folks at Kingston Nursery in Kingston & Kennedy's Country Gardens in Scituate have helped us in our gardening activities with donations and discounts.



Family Programs

Annual New Years Day Walk with North and South River Watershed Association (NSRWA) at SSNSC

Sunday, January 1, 2012 ~ 1:00-3:00pm.

Open to the public, families welcome!

Free, donations welcome. Please no dogs on the trails. Annual NSRWA welcome in the New Year with a walk on the wild side! Jointly sponsored with SSNSC, we will explore the perimeter of the Science Center on the Peripheral Trail. Explore various habitats from old pasture to red maple swamp to woodlands on this leisurely walk. Afterwards, warm the soul with hearty refreshments. For more information, contact the NSRWA [781-659-8168](tel:781-659-8168) and www.nsrwa.org.

Pre-registration not required.



Curious George Party

Saturday, January 14 ~ 10:00-11:30am

\$10M per parent/child pair (Max. of \$20 per family)

\$13NM per parent/child pair (Max. of \$26 per family)

For children ages 3 and up

Celebrate the many adventures of Curious George – without getting into too much mischief. After stories, crafts and games we'll enjoy a snack and just "monkey around"! *Limit 60 people.*

Pre-registration and Pre-payment Requested.

Snowbirds

Monday, January 16 ~ 10:00am-3:00pm

Free with Admission!

Cardinals, Blue Jays, Chickadees, Juncos – how brilliant they appear against the white of snow! Enjoy the holiday with a visit to the Science Center and learn about our feathered friends that brave New England winters, staying here while some of their cousins fly to warmer places. **Drop in** anytime to enjoy activities, exhibits, live animal presentations and more.

You'll be amazed at what you discover!



Family Fun Day

Alligator & Crocodile Show

Sunday, January 29 ~ 2 shows: 1:00pm and 3:00pm

Children: \$8M/\$12NM

Adults: \$5

Back by popular demand and with 2 shows! Join our favorite herpetologist, Michael K Ralbovsky of Rainforest Reptile Shows and learn about alligators and crocodiles. What is the difference between them. If you dare- hold an alligator! It's a fun and educational show for the whole family. Recommended for ages 3 and up with an adult.

Limited tickets. Sign up early.



Family Snowshoe Walk

Saturday February 11 ~ 1:00-2:30pm

\$5 Members per parent/child pair (Family max. \$10)

\$8 NonMembers per parent/child pair (Fam max \$16)

Bring the family and your snowshoes and join us for an adventure through the woods around the Science Center. We'll look for animal tracks, learn about winter plants, and then come inside for hot chocolate! Snowshoeing abilities of all levels welcome including first-timers!

(Snowshoes may be available for use.)

Pre-registration requested.

Save the Date:
The World of Peter Rabbit
Saturday, April 7

Spike Is Having a Birthday Party!

Sunday, February 5 ~ 1:00-2:30pm

\$10M per parent/child pair (Max. of \$20 per family)

\$13NM per parent/child pair (Max. of \$26 per family)

Appropriate for all ages

Since Spike the Green Iguana's birthday is a mystery, we picked a date to celebrate our reptilian superstar and you're invited! Join the party and have a close encounter of the jungle kind. Meet Spike and some of her rainforest friends and enjoy games and crafts.

Top off the festivities with a special Spike birthday cake – fun for everyone! *Limit 60 people.*

Pre-registration and Pre-payment Requested.

Winter Discovery Day!

Saturday, February 18 ~ 10:00am-1:00pm

Drop by for an outdoor discovery day at the Science Center! Together we'll discover frozen science and have fun in the snow. Perhaps we'll discover some tracks or other clues left behind by winter wildlife! Snow, mud, or rain, come dressed to enjoy and explore the winter weather.

FREE

Why Birds Sing

Saturday, March 24 ~ 1:00-2:30pm

\$5M (Max. of \$20 per family)

\$8NM (Max. of \$32 per family)

For families with youngsters in Kindergarten and up.

Find out why our most conspicuous feathered friends sing! Are they happy? What are they saying? By around January 14th they already start making seasonal sounds, and April 1st the Spring migrants start arriving. Through a short slide show the presenter will teach a call for each common bird shown. A brief explanation of **what** noises birds make and **why** they make them is revealed; mounts and carvings will be used. Answering this fun question makes this program a **hit** with everyone!



Adult Programs



Winter Birding at Cohasset-Scituate Coast

Saturday, January 14 (Snow/Rain date January 15)
AND Saturday, March 3 (Snow/Rain date March 4)
8:00-13:00am ~ \$5M/\$7NM

Most people assume that there are few birds around in winter, actually there are about 80 birds that can *only* be seen at this time of year! This stretch of coast from Cohasset to the North River, offers wide species diversity year-round. So whether you are a newcomer to birding or an "almost serious" birder please feel welcome to join us as we check out this prime birding area. Weather dependent. Dress warmly and bring binoc's & Field Guide. **Please pre-register and pre-pay for these trips. Meet at SSNSC at 7:45am.**

Singles Snowshoe Walk

(At Willow Brook Farm Preserve)
Sunday, February 12 ~ 1:00-3:00pm

Join us at Willow Brook Farm Preserve in Pembroke (Route 14) for a leisurely snowshoe walk through one of Wildlands Trust's most beautiful properties. We'll journey through old fields, forests, and wetlands as we meet new people and fellow snowshoers from the area. Parking is limited, so carpooling with friends is highly recommended. **No** pre-registration is required! Adults only please. (Snowshoes may be available for use.)



Professional Development Workshop Growing Up Wild

Saturday, March 17 ~ 9:00am-3:00pm ~ \$30/person
Growing Up WILD: Exploring Nature with Young Children is an early childhood education activity guide that builds on children's sense of wonder about nature and invites them to explore wildlife and the world around them. Workshop participants will receive a copy of the guide and certificate of completion. Growing Up WILD is sponsored by MA Wildlife. More info: phone Karen Kurkoski at 781-659-2559 x210 or kkurkoski@ssnsc.org. Bring a bag lunch and dress for outdoor activities.

Pre-registration & pre-payment required.



Join us each Wednesday at 7:00pm from January 18 to March 21 for our annual Water Watch lectures!

Photographing Birds and other Wildlife in Massachusetts: "Where, When and How"

Presented by Shawn Carey of *Migration Productions* and Photography Instructor

Thursday, February 23 ~ 7:00-9:00pm ~ \$5M/\$8NM, pre-registration requested, drop-ins welcome.

Photographing birds and other wildlife has become increasingly popular over the last ten years with vast the improvements in digital technology. Challenges still include such questions as where, when, and how do you photograph birds? Using his exhibit in Vine Hall as examples, Shawn will discuss these topics as well as the equipment needed (camera, computer and software) and tricks of the trade. He will introduce three Mass Audubon properties which have observation or photo blinds to assist in seeing and photographing birds and other wildlife. All of this along with some interesting stories and lots of give and take with the audience will provide for a lively gathering.



Tuccelli Chocolate Dipping Class

Monday, February 6 ~ 7:00-8:00pm ~ \$15M, \$18NM
From ages 9 to 90, students will create four, one of a kind chocolate covered gourmet treats. Tuccelli Confections will offer warm and melty Belgian chocolate with instructions on the art of dipping. Students will create their own personal mouthwatering objects d'art. When the chocolate sets, students will package and label their creations to keep for themselves or to give to a special someone. All material/food costs included in the fee. Just bring your inspiration & wear messy clothes!

Pre-registration required.

Tuccelli confections uses nuts, soy, wheat and milk items.

Terrariums & Dish Gardens

Saturday, February 25 ~ 1:00-2:30pm
\$10M/\$15NM

Adults and students Gr. 9 & up
Help lighten the winter blahs by building your own colorful indoor garden. Make it wacky or serene by adding your own decorations, or use some of ours. You have a choice of succulents or leafy plants for a bright location or plants for lower light conditions. Plants, tools, and soil will be provided. Bring your own container.



New Plants from Old

Saturday, March 24 ~ 10:00-11:30am ~ \$5M/\$8NM
Adults and students Gr. 9 & up

Got a lot of gangly houseplants that need dividing or cutting back? Learn how to make new plants from extra pieces, no chemicals needed. We will work with orchids, crown of thorns, begonias, succulents, cacti, and many other plants from the **Nature Center Greenhouse**. You will take home new plants, and instructions for how to work with your own plants to increase your collection or can be given as a personal gift.

Nantucket Basket Workshop for Beginners

Our current session is full. Please call for Spring dates.

Instructors: Hart "Pete" Peterson, Stephen Blampied, Pete Olson and Clif Thayer

Learn how to make these stylish and historic Nantucket Baskets. The kits include all materials and mold so you can continue making baskets.

Children's Programs

Homeschool Programs

For children ages 3-6, accompanied by an adult;
and children ages 7-11 (No adult required)
Second Tuesday of month, 10:00-11:00AM
January 10, February 14, March 13
\$10/child parent pair for ages 3-6
\$10/child ages 7-11

Join us for a series of programs designed especially for homeschoolers. Each month features a different theme with age appropriate activities. Two programs run at the same time, one for each age group. Remember that an adult must accompany each child ages 3-6. Please dress for the weather.

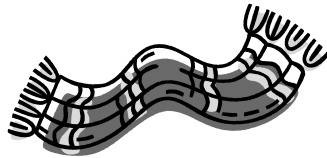
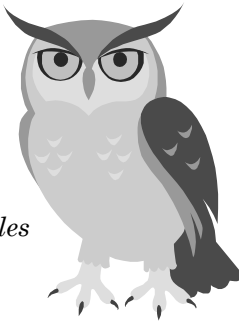
Pre-registration and pre-payment required. Enrollment limited. For more information & registration contact the Education Department at ext. 214.

Sensational Science

For children in grades 1 and 2
Third Thursday of each month
4:00-5:30pm
January 19 *Raptors: Owls, Hawks and Eagles*
February 16 *Whose Tracks are These?*
March 15 *Stone Wall Secrets*
\$10M/\$13NM for each class

Are you interested in science? Join other young scientists to discover our natural world through scientific exploration. Investigate the woods and fields for tracks, check out the old rock walls, learn how plants and animals survive the cold winter, and more. Find out how much fun science can be! Please dress for the weather.

*Pre-registration and pre-payment required.
Enrollment limited.*



Parents and Tots

For children ages 5 & under accompanied by an adult
Every Wednesday (except February 22)
9:30-10:45am
Flexible! Sign up for one or all classes
\$5/M, \$10NM per class per child/parent pair
Additional family members \$2/M, \$3/NM
Papooses free!

We will explore the outdoors and investigate the changes during the Winter Season. Take a leisurely guided walk to the pond, fields or the woods. Dress for the weather.

Pre-registration requested.



Mom and Me Nature Fun

For children ages 3-5 years accompanied by an adult (No papooses or older siblings please)
Third Tuesday of month (except February)
9:30-10:30am

January 17 *Owls*

February 28 *Groundhogs*

March 20 *Foxes*

\$8 M/\$11 NM per child/adult pair

Moms, Dads, Grandparents or other caregivers: bring your youngster to the Science Center and have fun with science! Explore the natural world with a different topic each month. Enjoy stories, games, crafts, hikes and other great activities, including a take-away to share at home.

We may go outside to investigate, so please dress for the weather.

*Pre-registration and pre-payment required.
Enrollment limited.*



February Vacation Week Programs

February 21-24

Flexible! Choose one or all 4 days

Program Options

Children 4 to 6 years

9:30am-12:00pm - \$35M/\$40NM

Children Grade 1 to Grade 3

Half Day, 9:30am-12:00pm - \$35M/\$40NM

Full Day, 9:30am-3:00pm - \$70M/\$80NM

"All Over The Map"

Join us for an adventure around the world as we discover animals and cultures from all over the earth. We'll learn to use compasses and maps to find our way and jump back in history as we learn about dinosaurs and prehistoric plants.

Tuesday: *Animals Around the World*

Wednesday: *Cultures Around the World*

Thursday: *Finding Your Way*

Friday: *Prehistoric Life*

Registration Info: **Please dress for the weather!**

Due to allergy considerations, please provide your child with a peanut-free snack. If your child is joining Lunch Bunch, also provide a peanut-free bag lunch. Notify us in writing of any medical issues, concerns, or allergies. Remember to sign your child in and out, and inform the naturalist of any special arrangements concerning drop off and pick up. Early registration is recommended. Registration is not complete until payment is received. *Pre-registration and pre-payment required. Enrollment limited.*



The South Shore Natural Science Center is a 501 (c) (3) non-profit organization dedicated to educating the public about the natural and cultural environments of the South Shore. Our mission is to provide natural science experiences that educate, excite, and commit every generation to conserve the environment and to encourage responsible use, stewardship and enjoyment of our natural resources.

Administrative Staff

Martha B. Twigg
Executive Director

Phil Kyle
Education Director

Tracey Cooke
Business Manager

Wendy Blomberg
Functions Coordinator &
Nature Store Manager

Debbie D'Isabel
Membership Coordinator

Berta Eddy
Coordinator of Volunteers

Chris Jacobs
Special Events Volunteer Coordinator

Emily Carreiro
Camp Director

Jean Kut
Grant Specialist

Susan Bailey
Financial Assistant

SSNSC Staff

Preschool Staff

Elsa Ryberg
Preschool Director
Diane Thureson
Assistant Director

Teachers

Melissa Kurkoski
Sheila McCarthy
Joan Aigen

Education Staff

Staff Naturalists

Jean Kut Emily Carreiro
Chris Jacobs Dot MacFarlane
Louise Beaudry (Trails)
Karen Kurkoski (Animal Curator)

Acting SSNSC Branch Advisory Board

Richard Johnson
Chairman
Penelope Allen- Baltera
Jon Bond
Jose Carreiro
Dick Sulc



More with your membership!

Science Center members now get discounts off parts and labor at Green Automotive in Marshfield, a complete automotive service that is committed to lessening the car industry's impact on our resources. Green Automotive offers customers "green options" in car care, including New England's first biodegradable oil change. To take advantage of the discount for Science Center members, download a form at our website www.ssnsc.org/members to receive a courtesy card from Green Automotive.

Don't forget Science Center members can show their SSNSC card to receive discounts at:

- Kennedy's Country Gardens, Scituate
- Gardeners' Choice, Pembroke
- Wild Birds Unlimited, Hanover
- South Shore YMCA (joiners' fee waived for new Y members – up to \$150 value)

Join SSNSC today for unlimited EcoZone admission, discounts on programs, events and summer camp and 10% off in our gift shop! Stop by our front desk to fill out an application or simply send in the form on this newsletter.



REGISTRATION INFORMATION

Advance registration is required for our programs, as it helps guarantee adequate staffing, supplies, and participants. We encourage pre-registration as far in advance as possible. If there are registration problems, speak directly to the program coordinator; our volunteers are not responsible for registration problems. Payment is necessary to hold your place for all of our programs. Please make prepaid registrations by 2 pm, two days prior to the program date. We gladly accept MasterCard, Visa, American Express and Discover. We do not issue a written confirmation. However, a receipt for program registration will be sent if requested. There is a \$25.00 handling fee for returned checks.

CANCELLATIONS

If you can't attend a program for which you've registered, please notify the Center as soon as possible. Cancellations received one week prior to the program will receive a full refund less a \$15.00 handling fee. A credit valid for one year from the date of issue will be given for any cancellation up to 48 hours before a program. Registrants who miss a program and do not give advance notice will forfeit the program fee. No refunds are given for class absences or for programs for which rain dates are scheduled unless a replacement is found. The refund will be mailed to the registrant. The Center may cancel a program if minimum registration is not met. In the event of cancellation due to weather, a taped message will be left on the answering machine, and prepaid fees will be refunded.

TRANSPORTATION

The Center's insurance plan does not cover private vehicles or their drivers. Drivers transport passengers at their own risk under their own insurance policies.

*Yes, I want to become a member of the South Shore
Natural Science Center.*

Enroll me as a member for one year.

Name _____

Address _____

City _____ State _____ Zip _____

Home _____

Phone _____

Circle one: New or Renewal Membership

\$65 • Family \$55 • Grandparents & Grandchildren

\$25 • Individual Adult \$150 • Corporate/Business

Enclosed is my donation for:

\$1,000+ Patron \$100+ Friend

\$500+ Sponsor Other _____

\$250+ Supporter

Additional gift for general use \$ _____

Special Project \$ _____ for _____

If charge: MC/VISA/AMEX/DISC (circle one)

Exp. Date _____ VCode _____

Signature of Cardholder _____

**SOUTH SHORE
NATURAL SCIENCE CENTER**
48 Jacobs Lane, P.O. Box 429, Norwell, MA 02061
www.ssnsnc.org



Nonprofit Org.
US Postage
PAID
Norwell, MA
Permit No. 6



This newsletter produced in cooperation with Plymouth County Convention & Visitors Bureau and the Plymouth County Commissioners

*Please deliver to
addressee or current resident*



Now Appearing in Vine Hall Gallery

"4 Seasons of New England"~ Photography show by Duxbury Camera Club ~ On Exhibit through January 16
View the variety and talents by members of the Duxbury Camera Club in this inaugural photography show. Photographs from the 60 member club presents personal interpretations of familiar South Shore locations and beyond. For more information about the Club, view the website www.duxburycameraclub.org.

Norwell High School Arts Show~January 17-February 4~Opening Reception: Saturday, January 21 ~ 2:00-4:00pm
Students from the Norwell High School Art Department are proud show their works in an annual exhibit at the South Shore Natural Science Center. This year's work is a representation of various students talents from Art I, Art II, Advanced Placement Art: Drawing as well as an art elective program. This curriculum gives students the opportunity to concentrate on a single medium and explore its properties and possibilities. Students in this year's elective program have taken Drawing, Painting, Pottery, Digital Photography II, Computer Graphics, and Architectural Rendering. In addition we have a large talented group of AP students that will be displaying their works.

Birds and other Wildlife of Massachusetts

Photography show by Shawn Carey ~ February 8- March 3
A native of Pennsylvania, Shawn moved to MA in 1986. He combined his interest in photography and birds together in 1991. By 1994 he and good friend Jim Grady started Migration Productions as a way to present their multi-image presentations of birds and wildlife to the public through a variety of medias such as photographs, video, sound tracks and interviews. For additional information www.migrationproduction.com. He also teaches bird photography workshops for Massachusetts Audubon. Shawn's exhibit ranges from photos and close-ups of the Eastern Bluebird, Hooded Seal, to a Short-eared Owl. His photos have been published in the Boston Globe, New York Times, Mass Audubon Sanctuary magazine, Science magazine, Hawk Mountain Sanctuary magazine and many others over the last 12 years. Hear more about how he captures these perfect photos at his Workshop, February 23!

